

WORKSAFE

NEW ZEALAND | MAHI HAUMARU
AOTEAROA

THE NEW ERA IN HEALTH & SAFETY REGULATION IN NZ

WHERE WE HAVE BEEN

WHAT CONSTRUCTION LEADERS CAN
EXPECT

PREPARED FOR Construction Clients Group 2014

THE CHANGING FACE OF THE WORKPLACE HEALTH & SAFETY REGULATOR

1891 to June 2012 (121 yrs)



July 2012 to Dec 2013 (1.5 yrs)



A NEW HEALTH & SAFETY REGULATOR

Dec 2013 and beyond...



NEW GOVERNANCE MODEL FOR THE HEALTH & SAFETY REGULATOR

1891 to 2012

Reported to Minister of Labour via Secretary of Labour

From Dec 2013

Governed by Board that reports directly to Minister

Chief Executive

Gordon MacDonald

Our Board

Chair:

Prof Gregor Coster

Dep Chair:

Ross Wilson

Members:

Paula Rose

Don Stock

Dr Patrick Strange

Kerry Prendergast

Chris Ellis

NEW LEGISLATIVE FRAMEWORK

1992: Health & Safety in Employment Act, 1992

2014: Health & Safety Reform Bill before the House

2015: Health and Safety at Work Act is expected to be in force

NEW HIGHLY TARGETED APPROACH

Target:

- Serious harms down 25% by 2020

Methods:

- Formally partner with ACC
- Evidence-based National Campaigns focussed on practices and causes
- Construction on the short list!

INTERVENTION APPROACH

Universal activity

Targeted activity

Reactive activity

OUR FOCUS AREAS IN CONSTRUCTION NATIONALLY

Rolling programme of intensive inspection

- **Falls from heights**

3rd year of project. 25% reduction in reported harms since 2011

- **Excavation**

- **Mobile Plant**

- **Asbestos Removal**

CONSTRUCTION ASSESSMENT TOOLS

Inspectors supported with pilot-tested site assessment tools for

- **falls from heights**
- **Excavation**
- **Mobile plant**
- **Asbestos removal.**

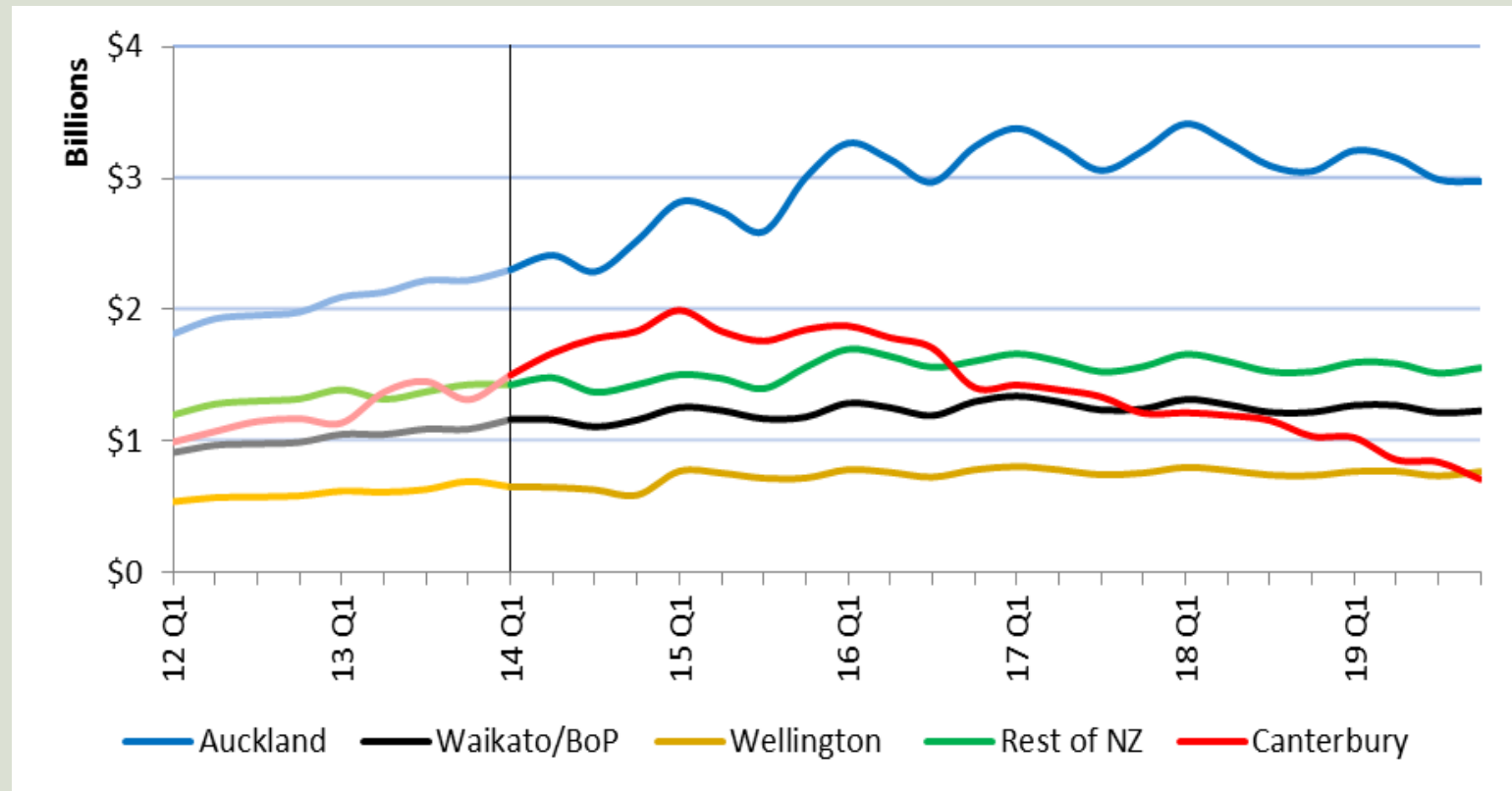
WORKING WITH REGIONAL DIFFERENCE

4 main construction regions

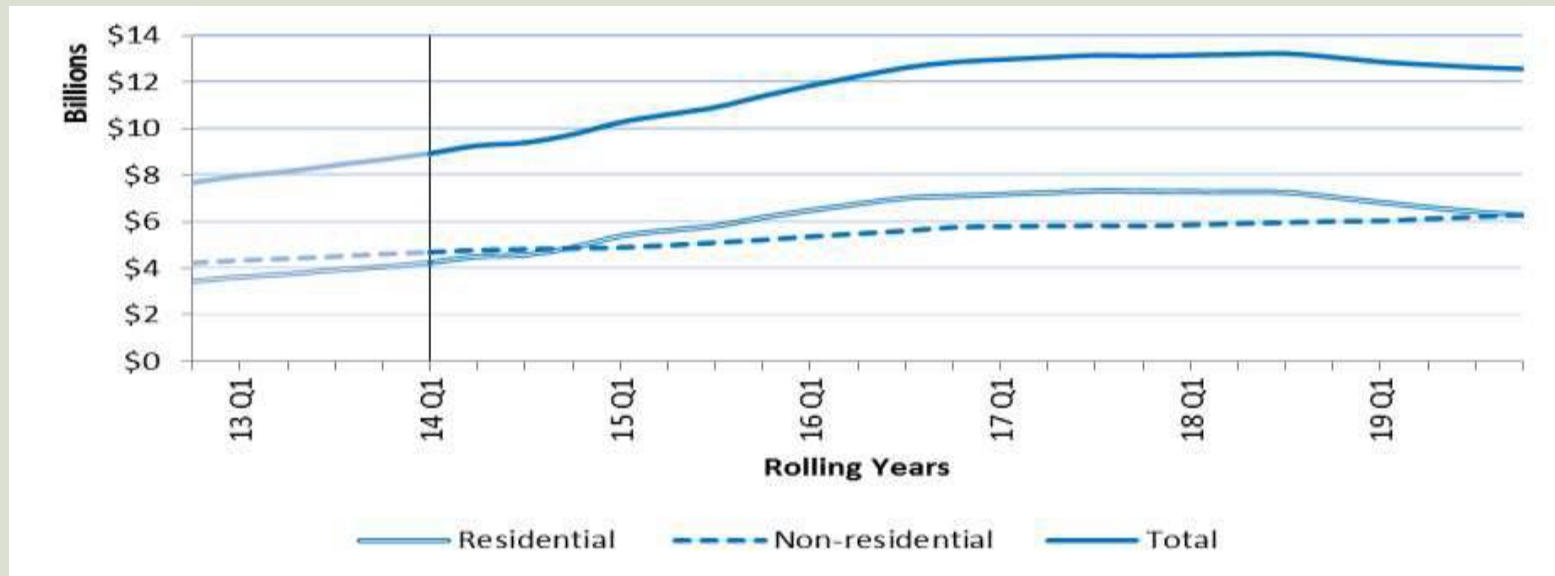
- Auckland,**
- Waikato-BoP**
- Wellington**
- Canterbury**

Each region has a unique mix of civil construction, commercial building & residential building.

VALUE OF ALL BUILDING AND CONSTRUCTION BY REGION (BY QUARTER)



RESIDENTIAL LEADS GROWTH FOR AUCKLAND



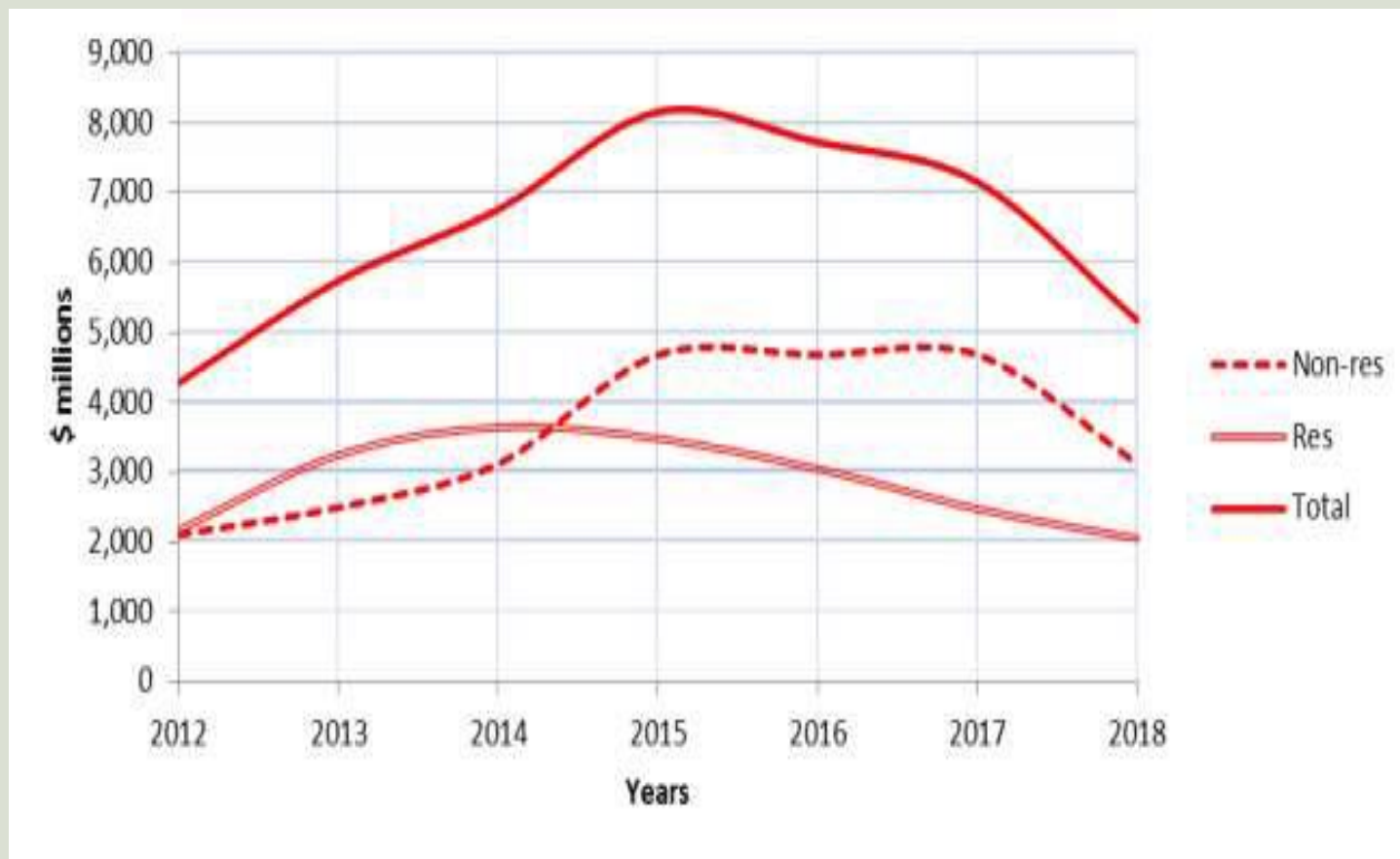
WHAT WE'RE DOING IN AUCKLAND

Targeting key harms and high-risk areas:

- *Falls from Heights*
- *Mobile plant*
- *Excavation*

Asbestos

CANTERBURY REGION



WHAT WE'RE DOING IN CANTERBURY

Targeting key harms and high-risk areas: *Asbestos, Falls from Heights, Mobile plant and Excavations.*

- **Dedicated inspectorate teams including rolling secondments with WorkCover NSW inspectors until November 2015**
- **Huge increase in worksite assessments – 399 in 2012, to 704 in 2013**
- **Enforcement notices – 122 in 2012 to 470 in 2013.**



HELPING TO EDUCATE AND INFORM

More than 2,200 people have attended a WorkSafe trade breakfast or event since August 2013 on:

- **Asbestos**
- **Falls from Height**
- **Mobile Plant**
- **Excavations**
- **Fatigue in construction**



TARGETED GUIDANCE FOR INDUSTRY

Targeted guidance material in areas of high risk:

- **Asbestos toolkit (series of 8 factsheets)**
- **Mobile Plant and Quick Hitch factsheets**
- **Excavation factsheets**
- **Safety Nets Best Practice Guideline**
- **Fatigue in construction factsheet**



CANTERBURY REBUILD SAFETY CHARTER



- 33 original signatories **more than 125 now**
- 31 endorsees
- 80+ organisations completed self-awareness tool
- Branding campaign launched
- Newsletters & events
- Next: Quarterly campaign on critical risks



WELLINGTON REGION

Prediction:

- **31% growth in Construction from \$1.8bn (2012) to \$2.3bn (2017)**
- **72% of this growth is residential**
- **Small growth in non-residential work**

WELLINGTON REGION

Govt and regional agencies and major institutions controlling

- large estates**
- Major & minor capital works programmes**

WorkSafe NZ is interested in working with you to influence good health & safety practice

WORKSAFE

NEW ZEALAND | MAHI HAUMARU
AOTEAROA

[worksafe.govt.nz](https://www.worksafe.govt.nz)
0800 030 040